



Goodfellows - Mitcham

7-8 Fairgreen Parade, London Road, Mitcham, CR4 3NA

T: 020 8646 8686

mitcham@goodfellows.co.uk

www.goodfellows.co.uk

Haslemere Avenue, Mitcham



Overview...

Three Bedroom

Off Street Parking

Freehold

Local Authority: Merton

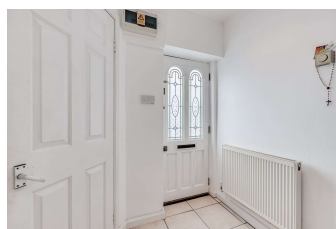
Council

Council Tax: Band D

EPC Rating: D

Estimated Rental Income:

£1,700pcm



Our view...

Introducing a charming 3-bedroom end of terrace home on Haslemere Avenue, CR4, perfectly located near SW19, Colliers Wood Tube station, Dene City Farm, and historic Merton Abbey Mills. The property benefits a kitchen, lounge diner, cloakroom, 3 bedrooms, family bathroom, large garden and off street parking.

Nearby Schools:

- Haslemere: 0.02miles

- Liberty: 0.45miles

- Benedict Academy: 0.53miles

Offers in excess of: £475,000

Freehold

- RESIDENTIAL SALES
- RESIDENTIAL LETTINGS
- PROPERTY MANAGEMENT
- FINANCIAL SERVICES
- LAND AND NEW HOMES
- CONVEYANCING

www.goodfellows.co.uk



Living Room/Dining Room
17'5" x 12'3" (5.3m x 3.73m)



Bedroom One
13'5" x 12'5" (4.1m x 3.78m)

Kitchen
11'4" x 7'10" (3.45m x 2.4m)

Bedroom Two
10'5" x 6'8" (3.18m x 2.03m)

Garden
49' x 26' (14.94m x 7.92m)

Bedroom Three
10'10" x 5'1" (3.3m x 1.55m)





Your View...





TOTAL APPROXIMATE FLOOR AREA 734 SQ.FT. (68.2 SQ.M.)

produced by www.darrylrixonphotography.co.uk for Goodfellows Estate Agents

Whilst care is taken in the production of this floorplan, its intended use is solely for layout guidance only to assist you when making a decision to physically view the property in person. Windows, door opening, appliances, fixtures & fittings are only approximate & not guaranteed. When making a legal commitment to purchase you should personally check all dimensions, shapes & room layouts before making a final decision that you may later be reliant upon.

Local Authority
Merton Council

Referral Fee's

We may refer you to recommended providers of ancillary services such as Conveyancing, Financial Services, Insurance and Surveying. We may receive a commission payment fee or other benefit (known as a referral fee) for recommending their services. You are not under any obligation to use the services of the recommended provider. The ancillary service provider may be an associated company of Goodfellows

Fixtures & Fittings

Fixtures and fittings other than those mentioned above to be agreed with the Seller.

All Measurements

All Measurements are Approximate

Floorplan Clause

Measurements are approximate. Not to Scale. For Illustrative purposes only



Goodfellows - Mitcham

7-8 Fairgreen Parade, London Road, Mitcham, CR4 3NA

T: 020 8646 8686

mitcham@goodfellows.co.uk

For full EPC please contact the branch

www.goodfellows.co.uk